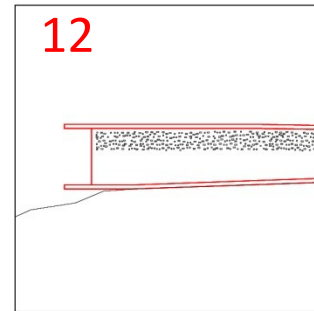
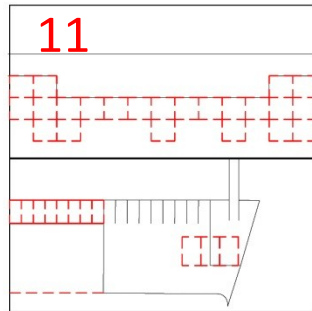
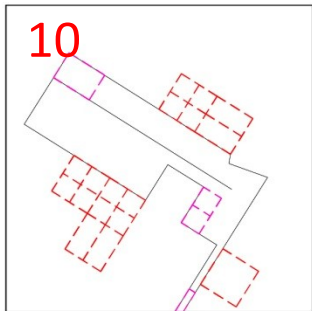
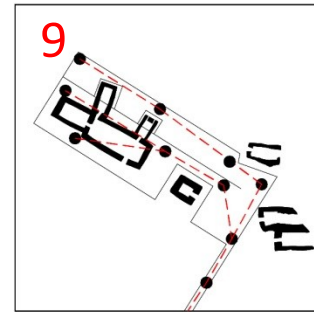
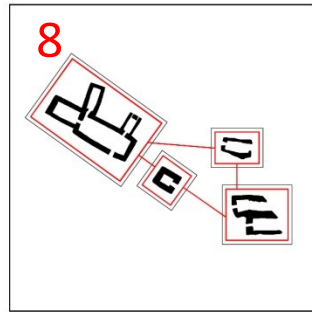
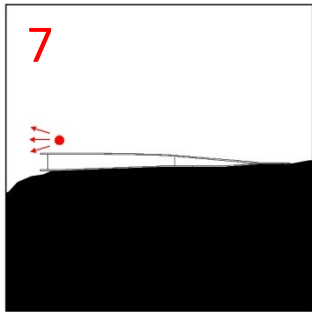
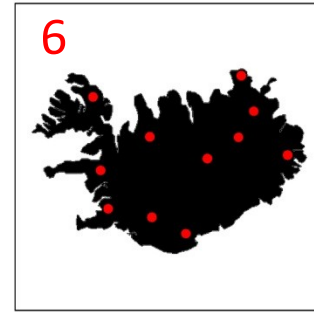
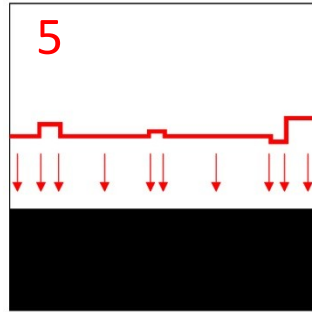
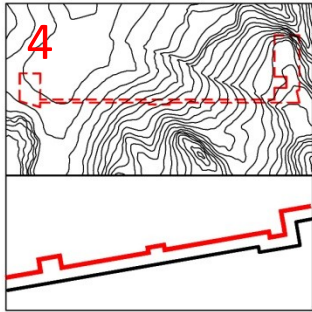
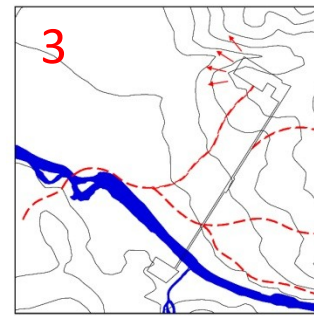
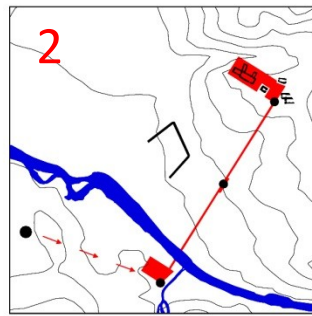
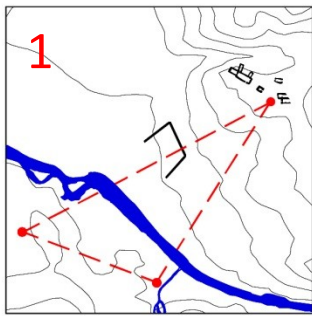


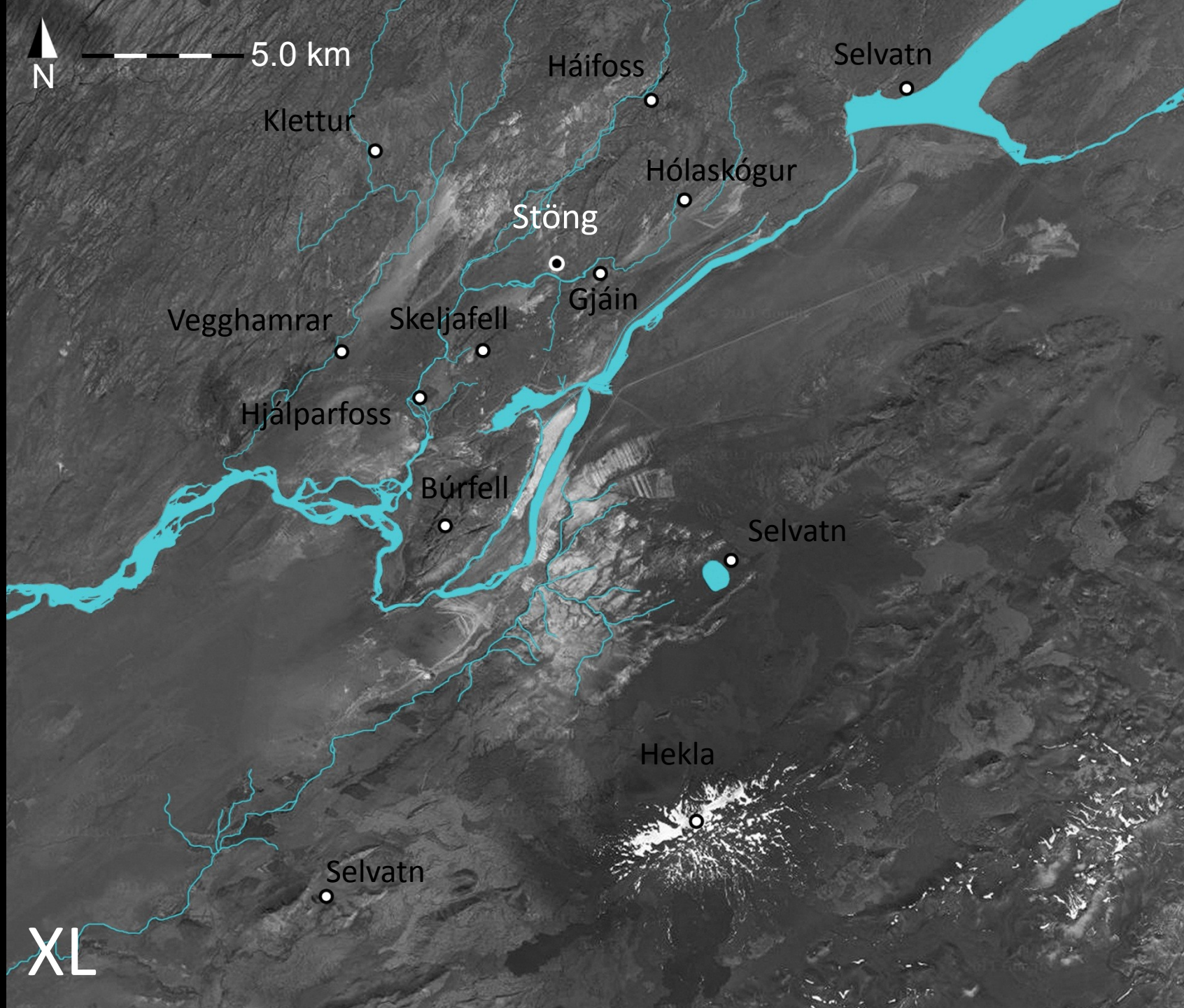
Interpreting Spaces

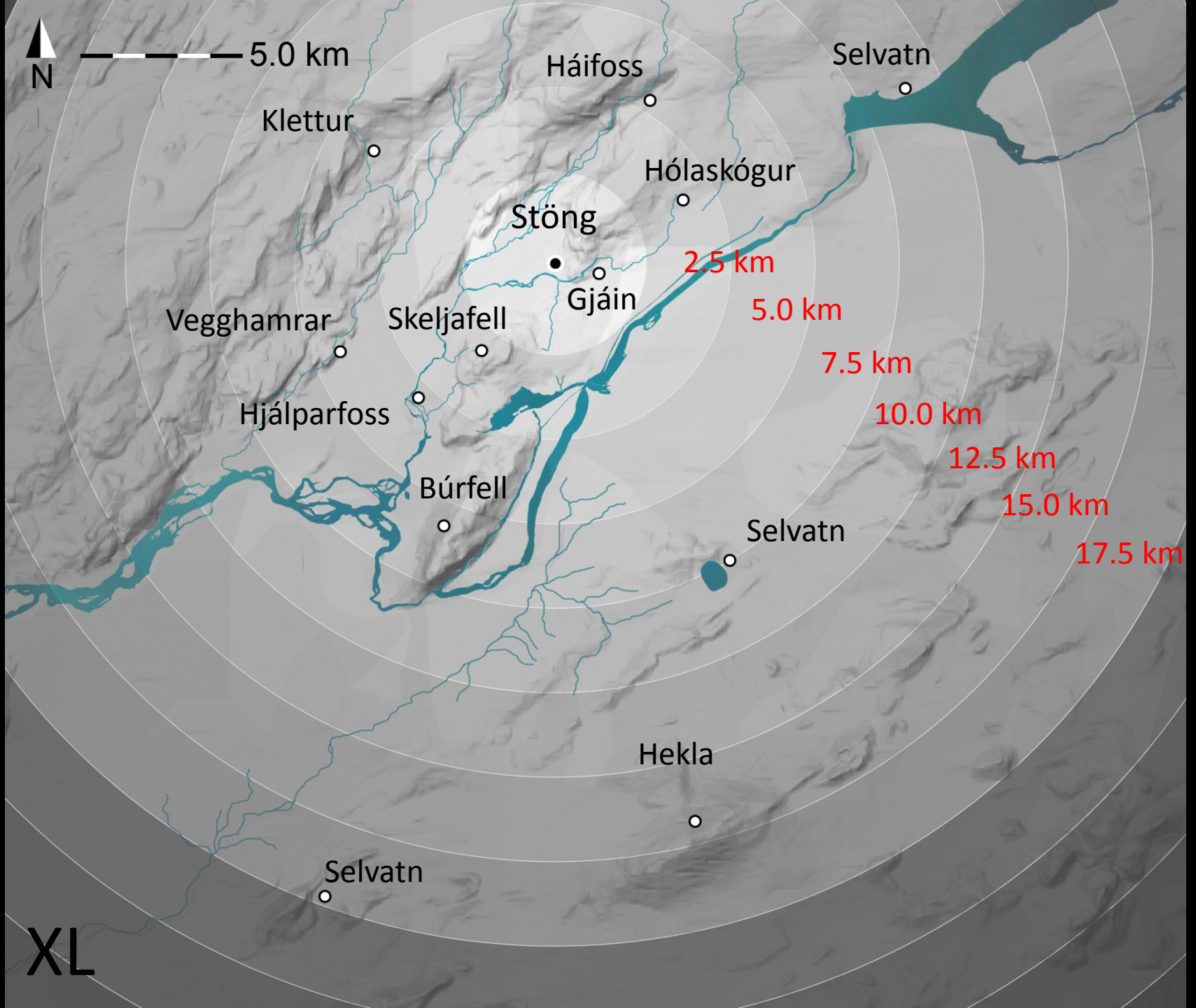
Stöng í Þjórsárdal

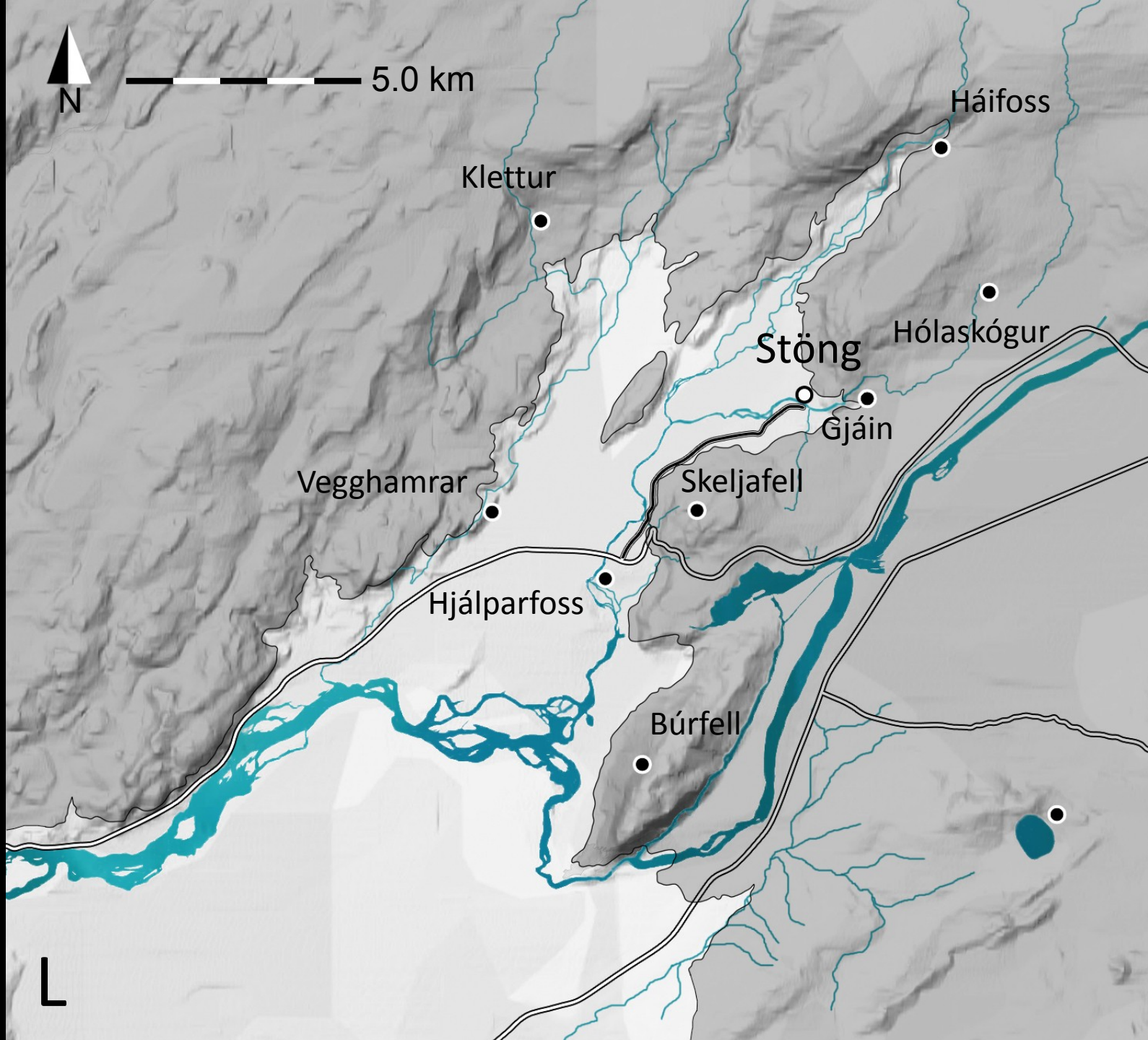
1- Nature and History

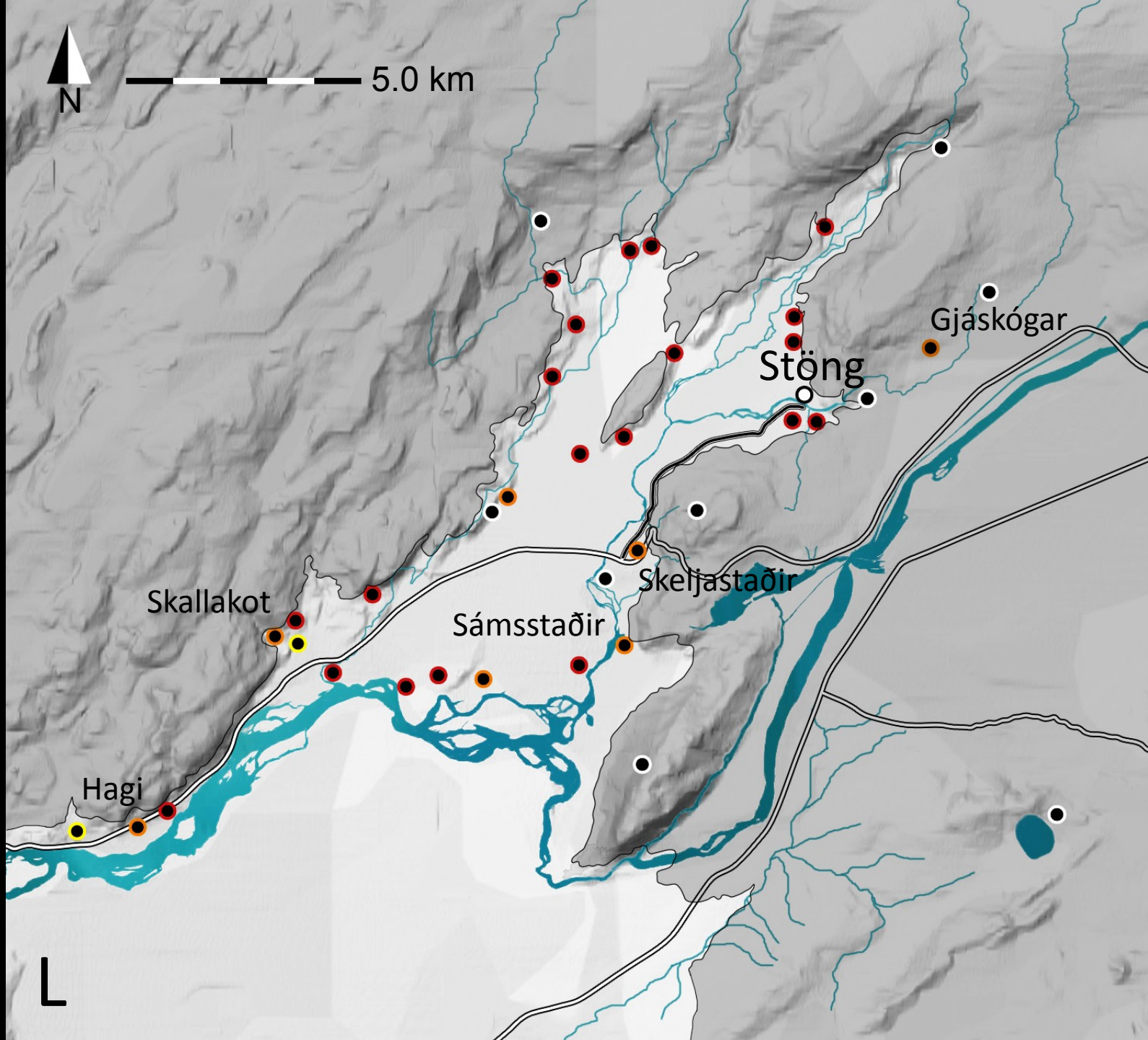
2- History and Interpretation

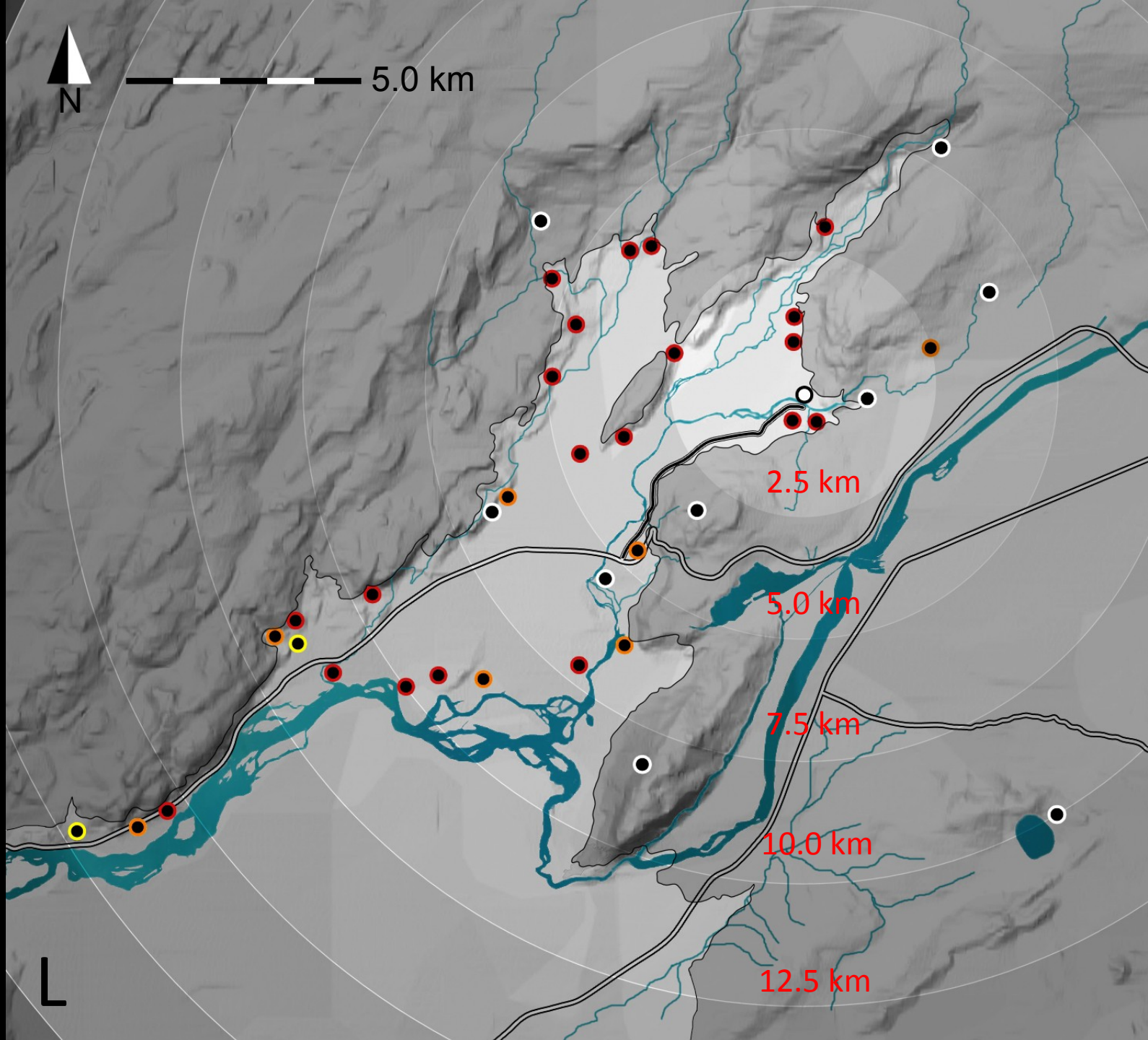


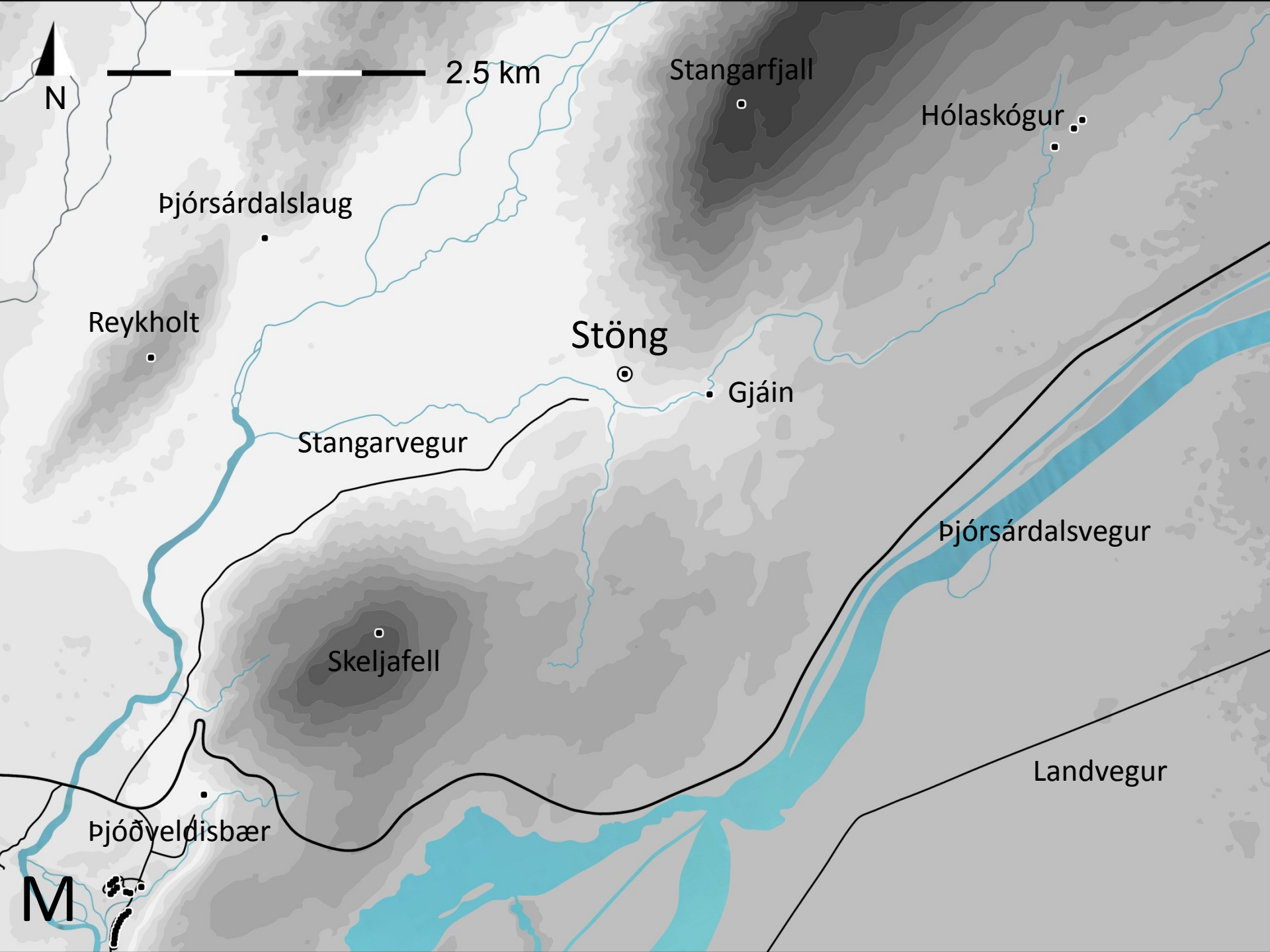


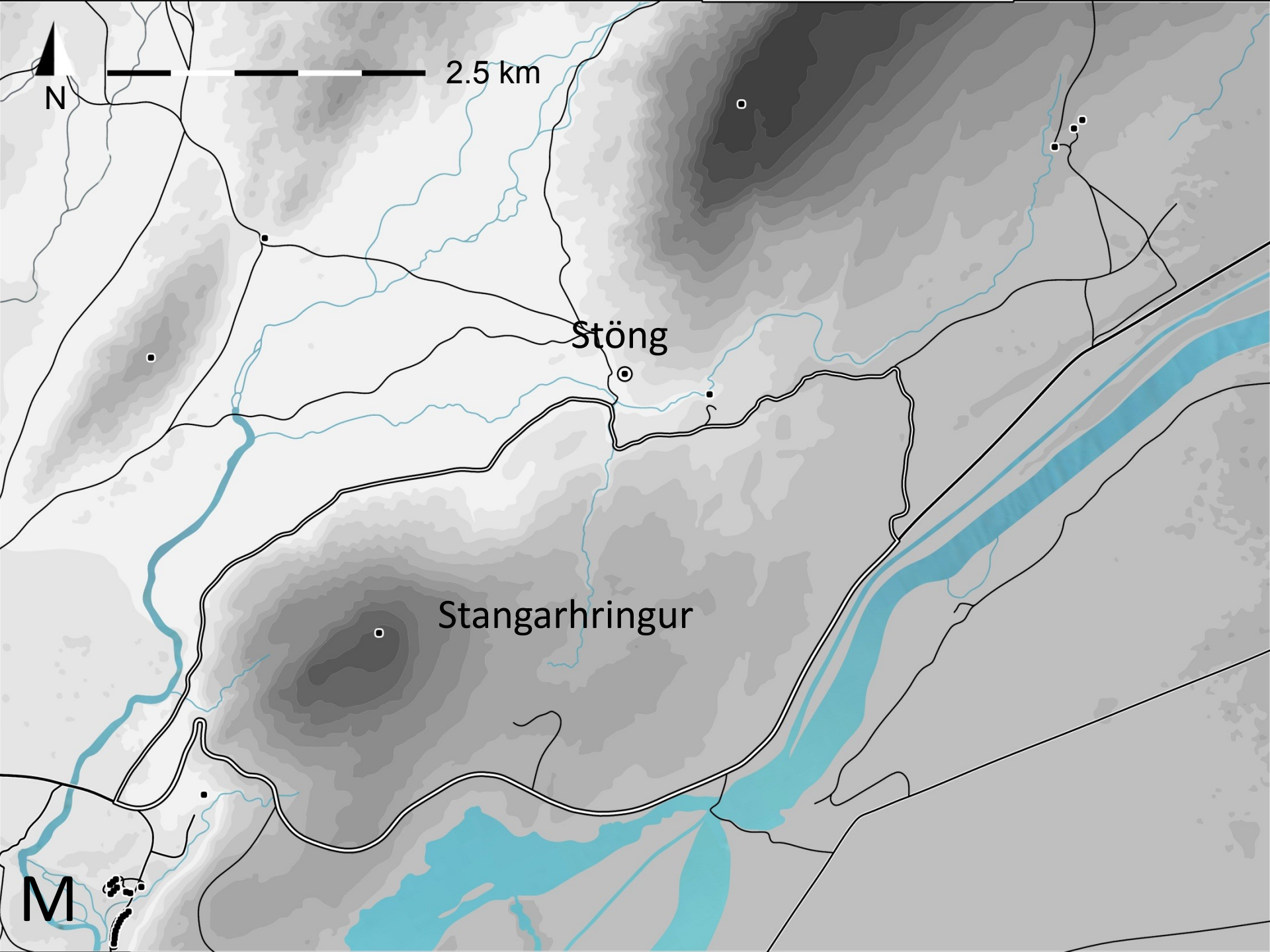












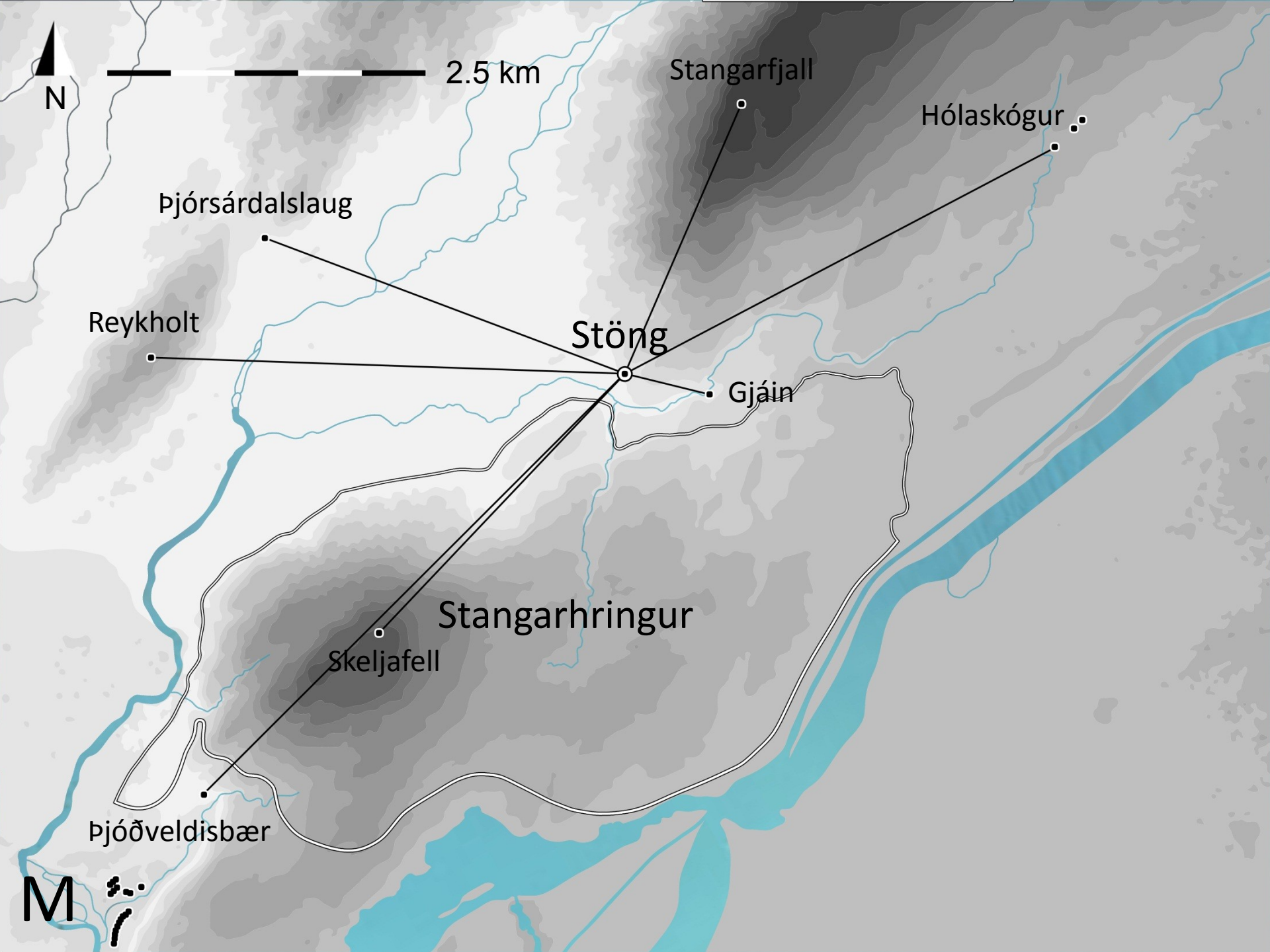
2.5 km

N

Stöng

Stangarhringur

M



2.5 km

N

Stangarfjall

Hólaskógur

Þjórsárdalslaug

Reykholt

Stöng

Gjáin

Stangarhringur

Skeljafell

Þjóðveldisbær

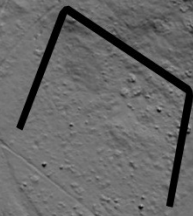
M



STANGARFJALL



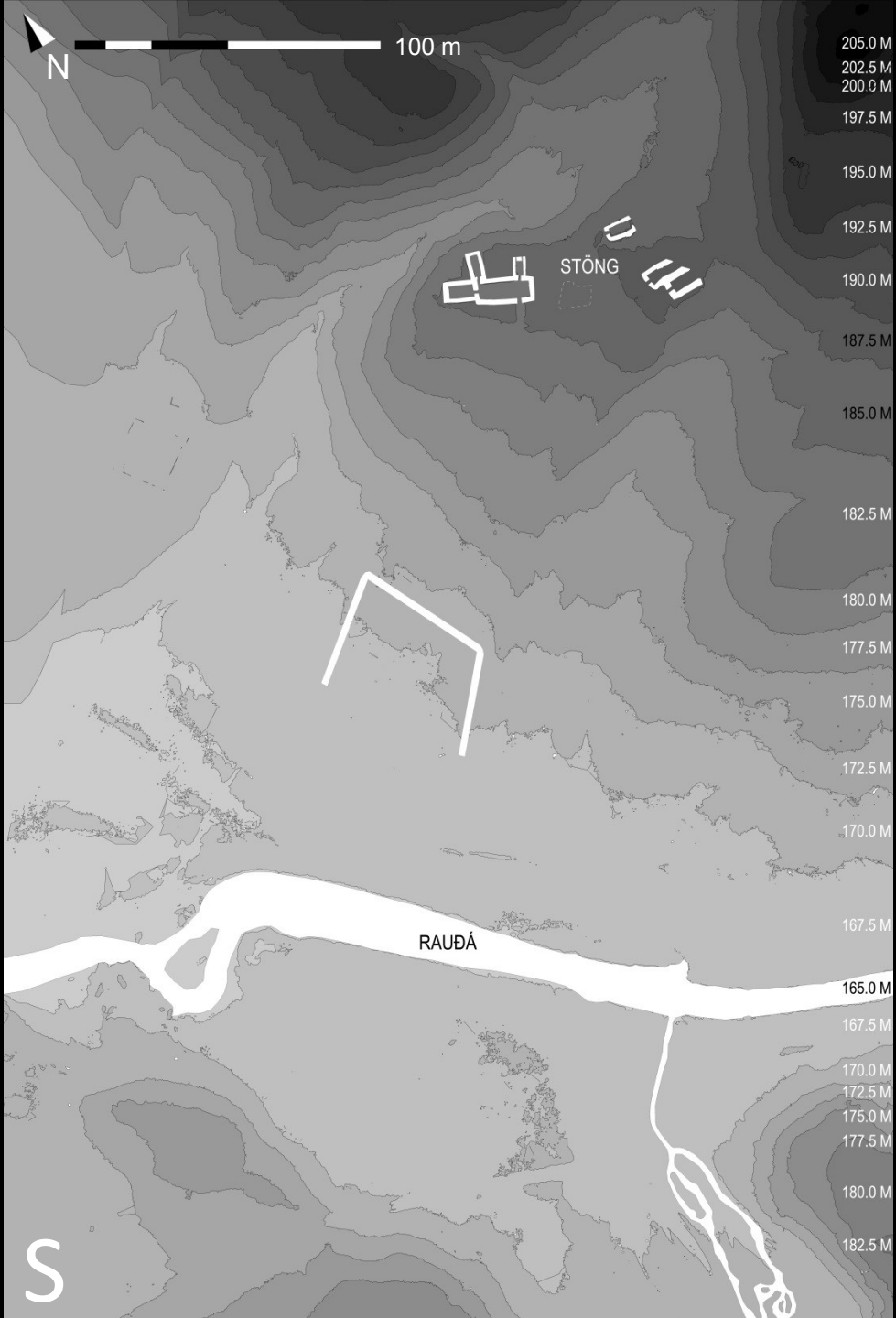
STÖNG

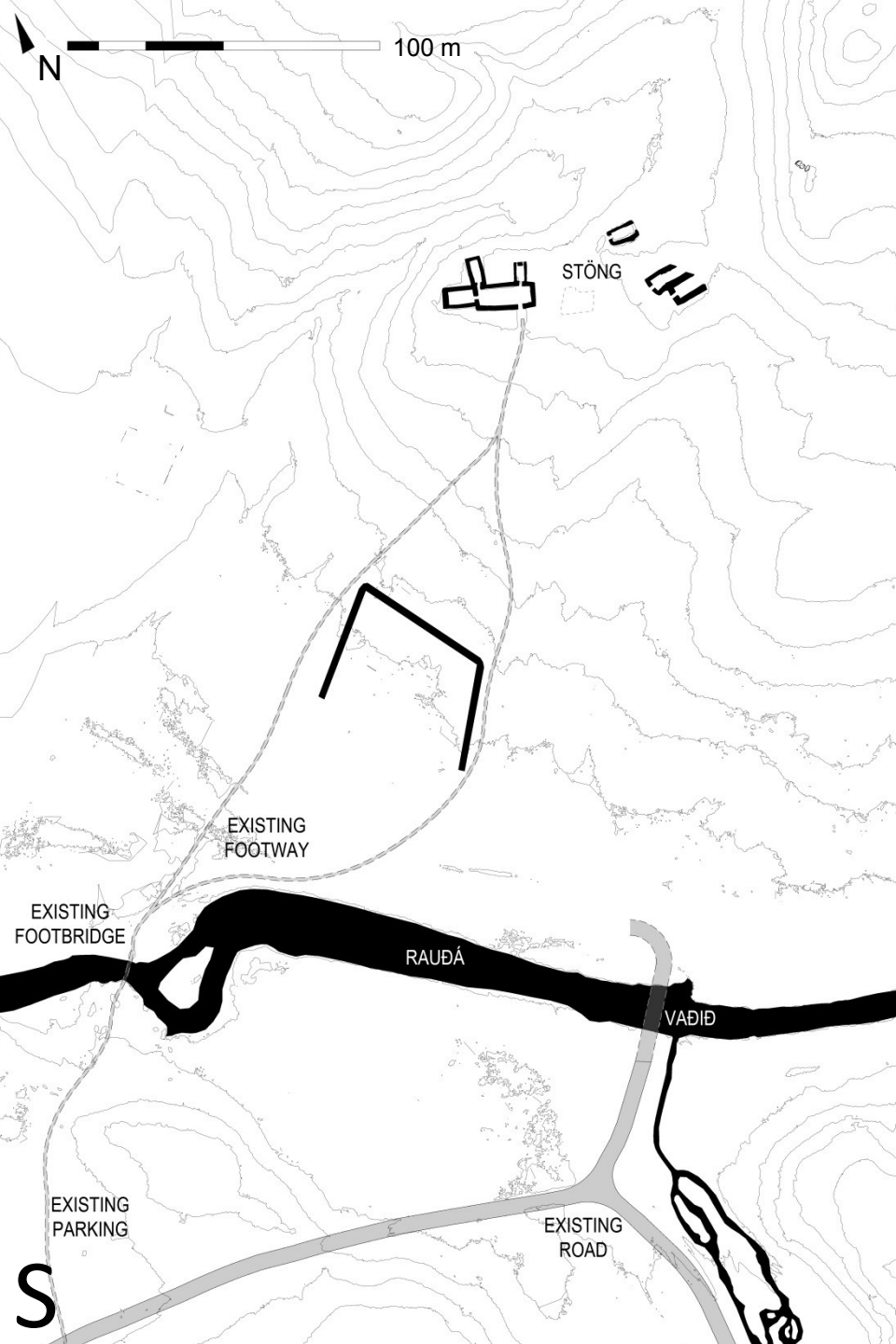


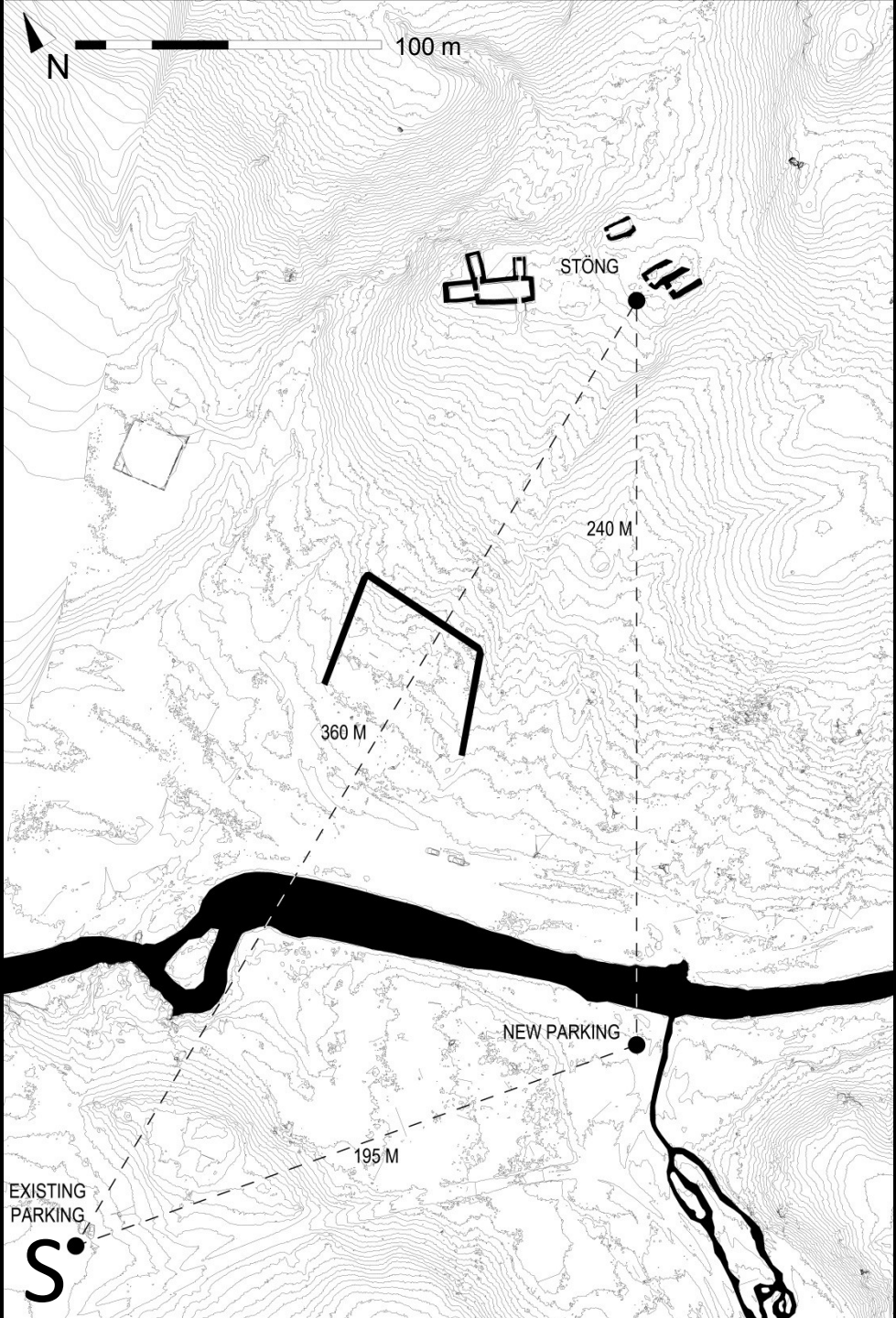
RAUÐÁ

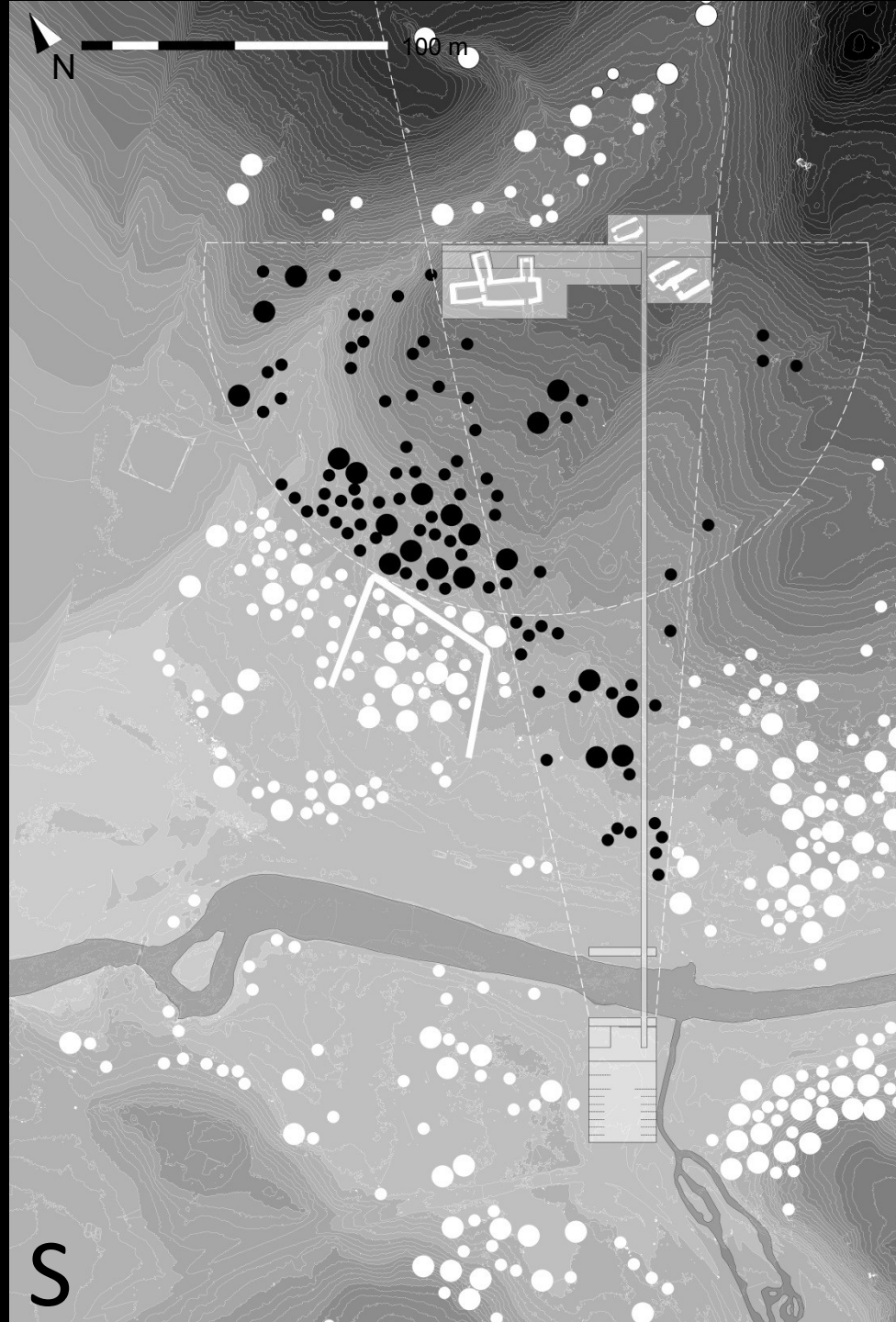
EXISTING PARKING





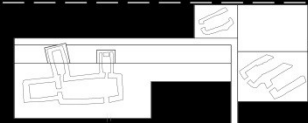








MOUNTAINS / VIEWPOINT



PLATFORM / SHELTER

ARCHAEOLOGICAL SITE

FOOTPATH

VEGETATION

FOOTPATH/CROSSROADS

REST AREA
FOOTBRIDGE

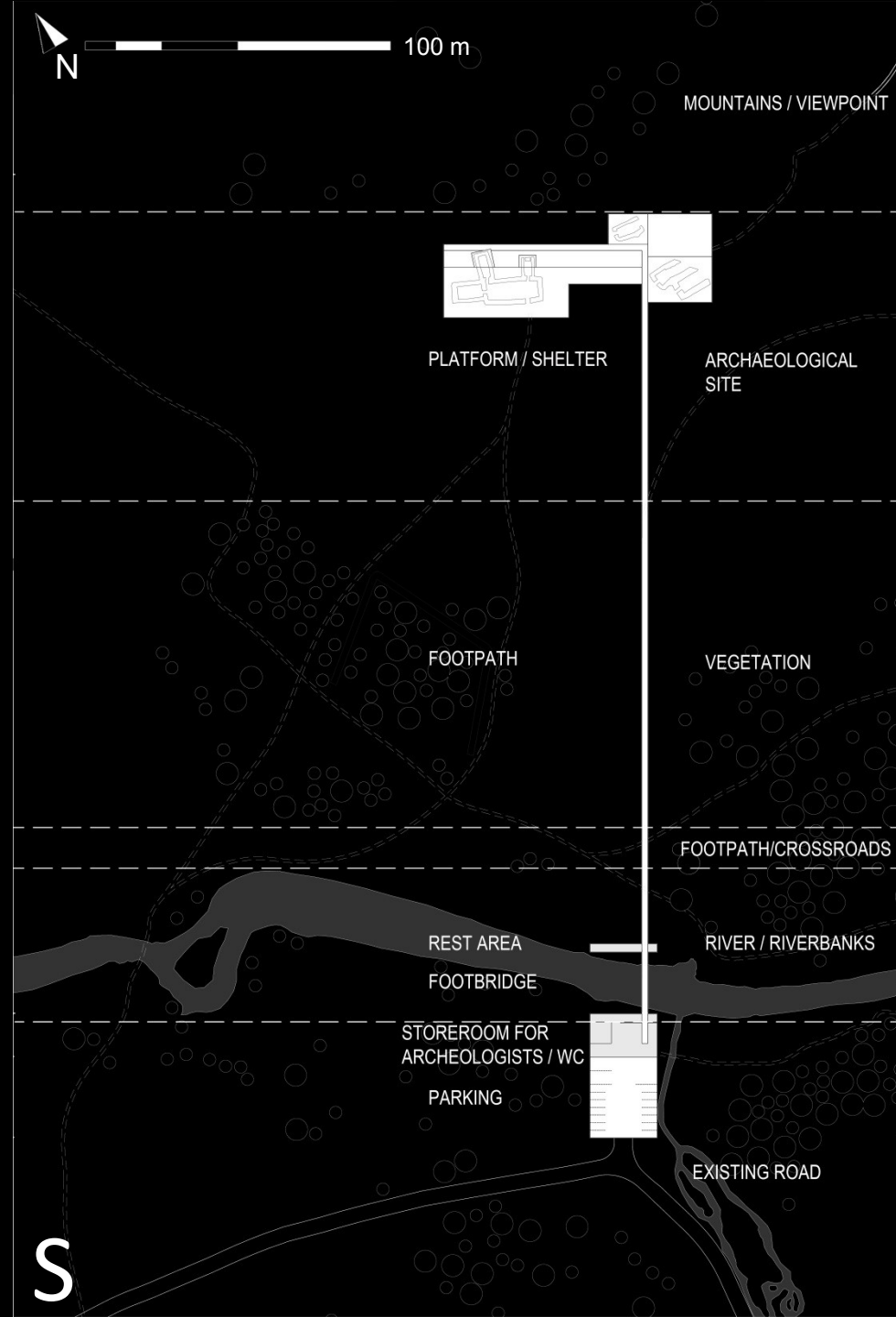
RIVER / RIVERBANKS

STOREROOM FOR
ARCHEOLOGISTS / WC

PARKING

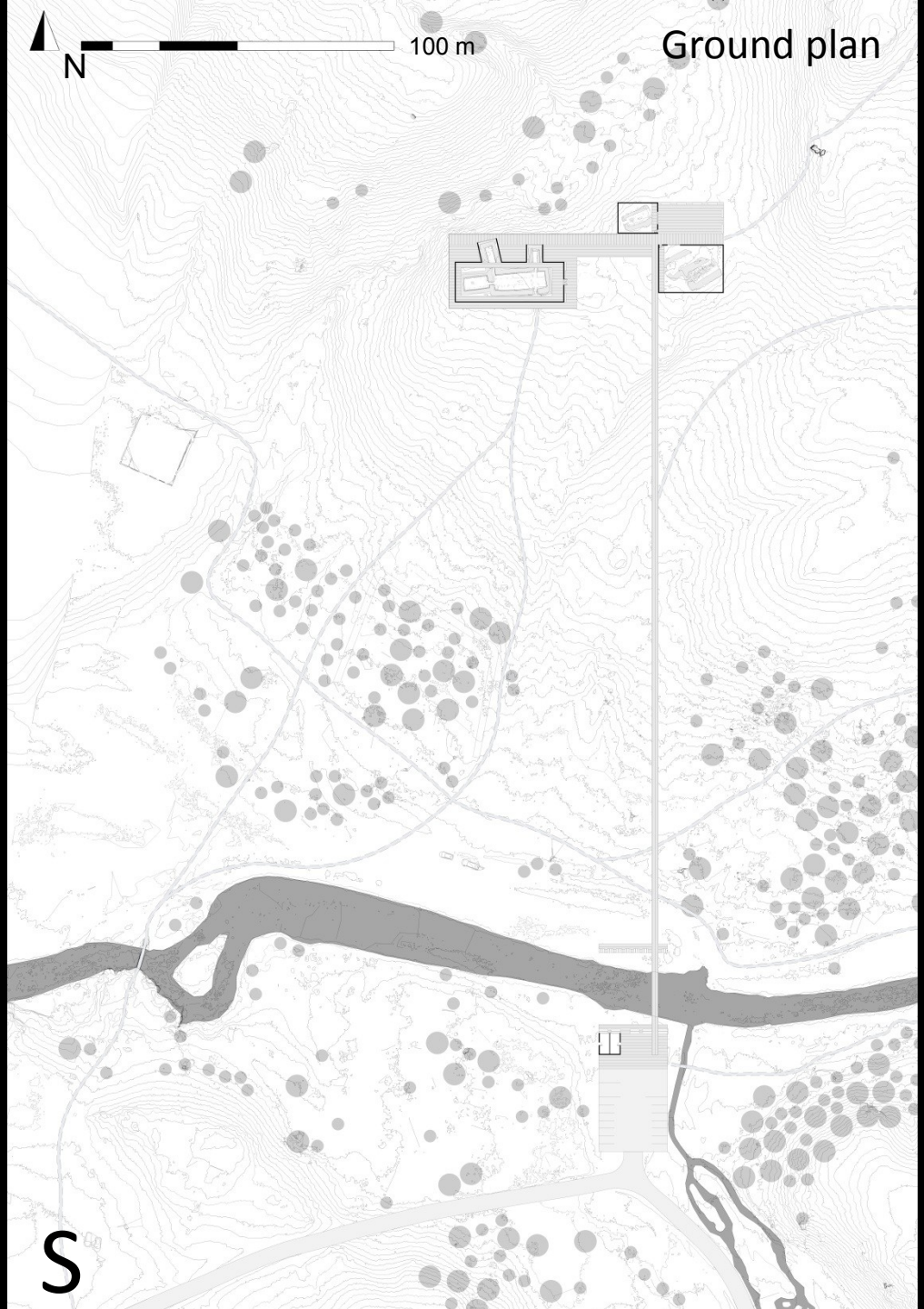
EXISTING ROAD

S





Ground plan



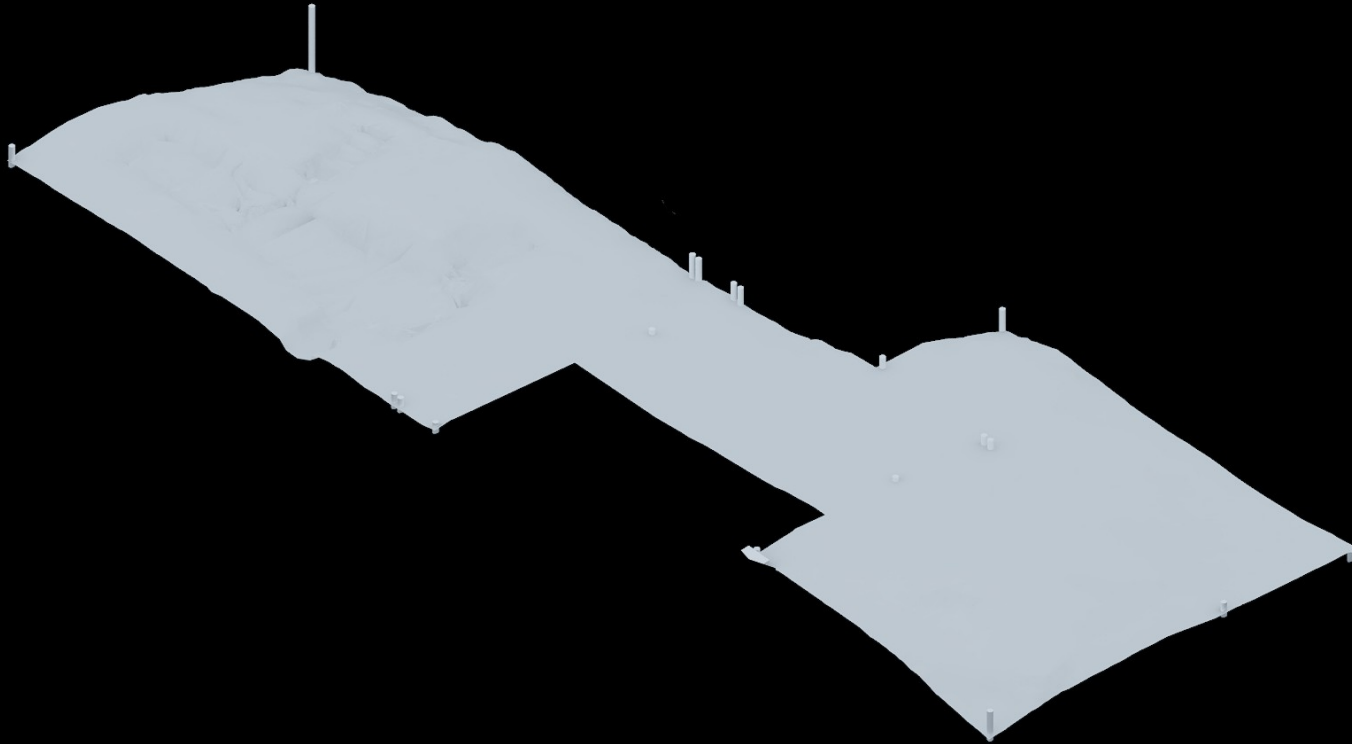


Roof plan

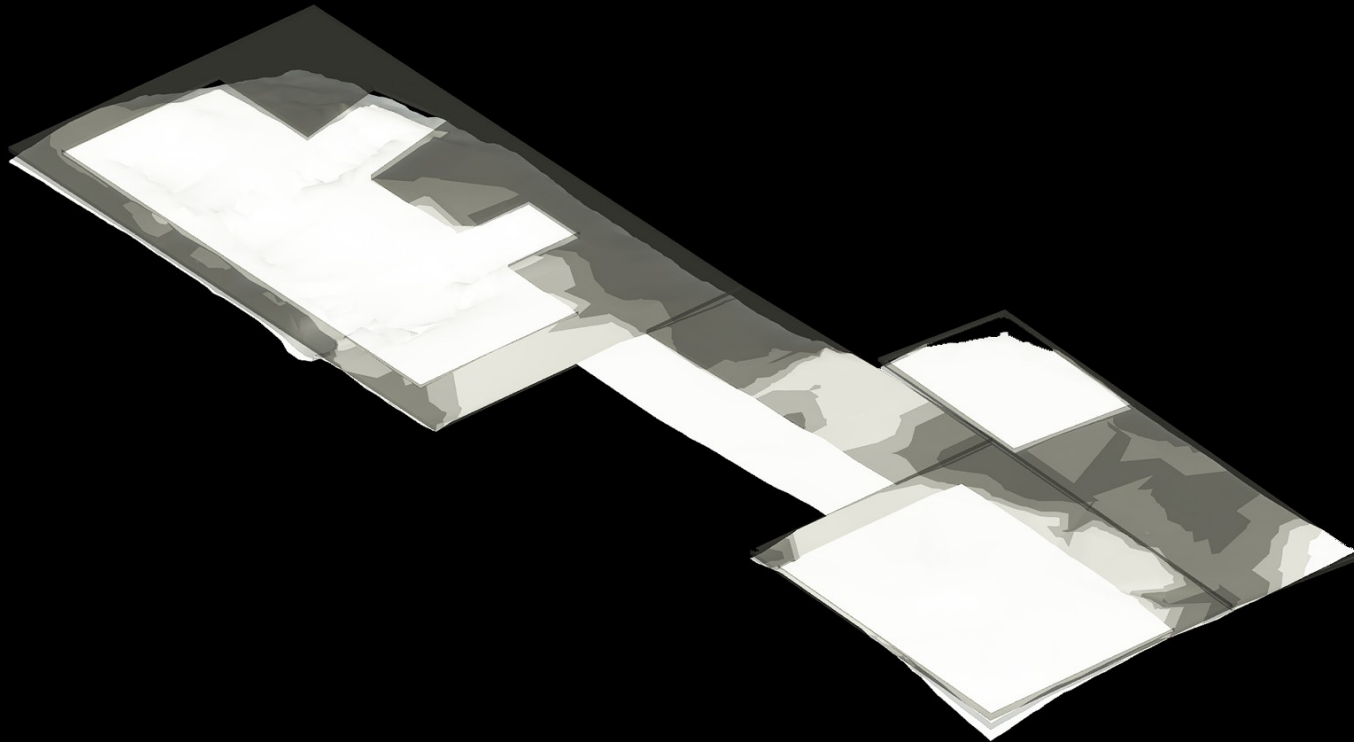


S

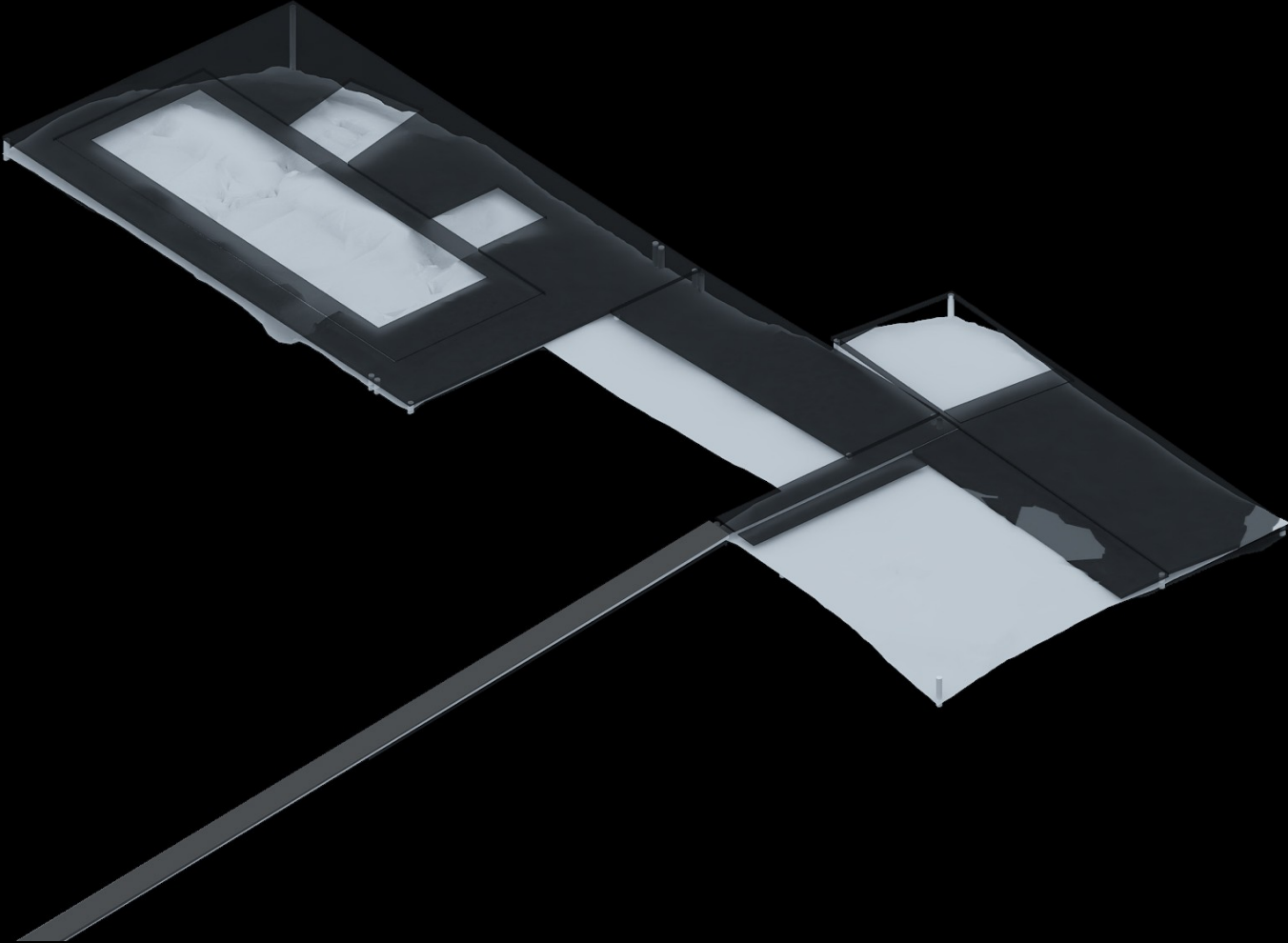
Morphological Analyses I



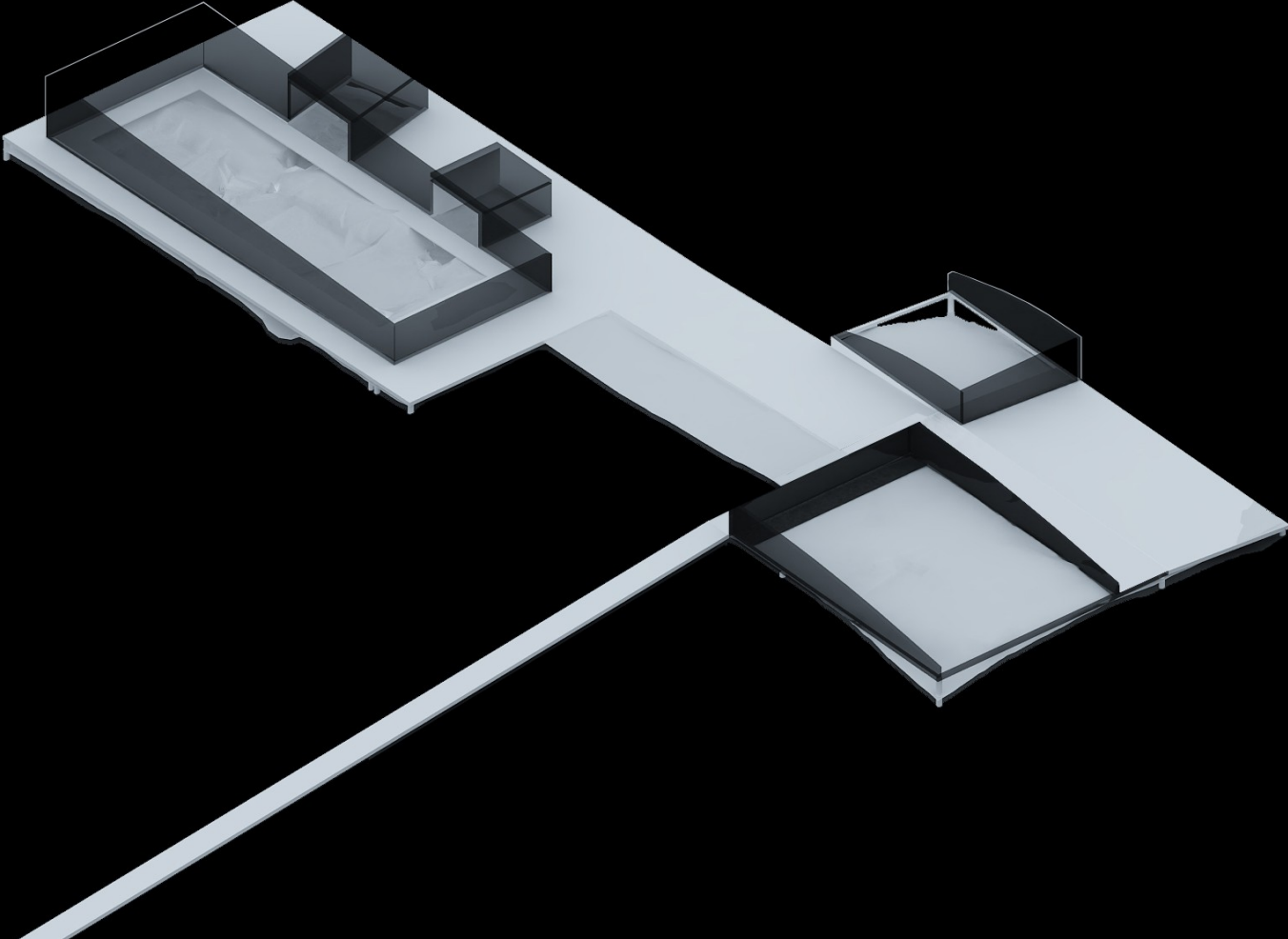
Morphological Analyses II



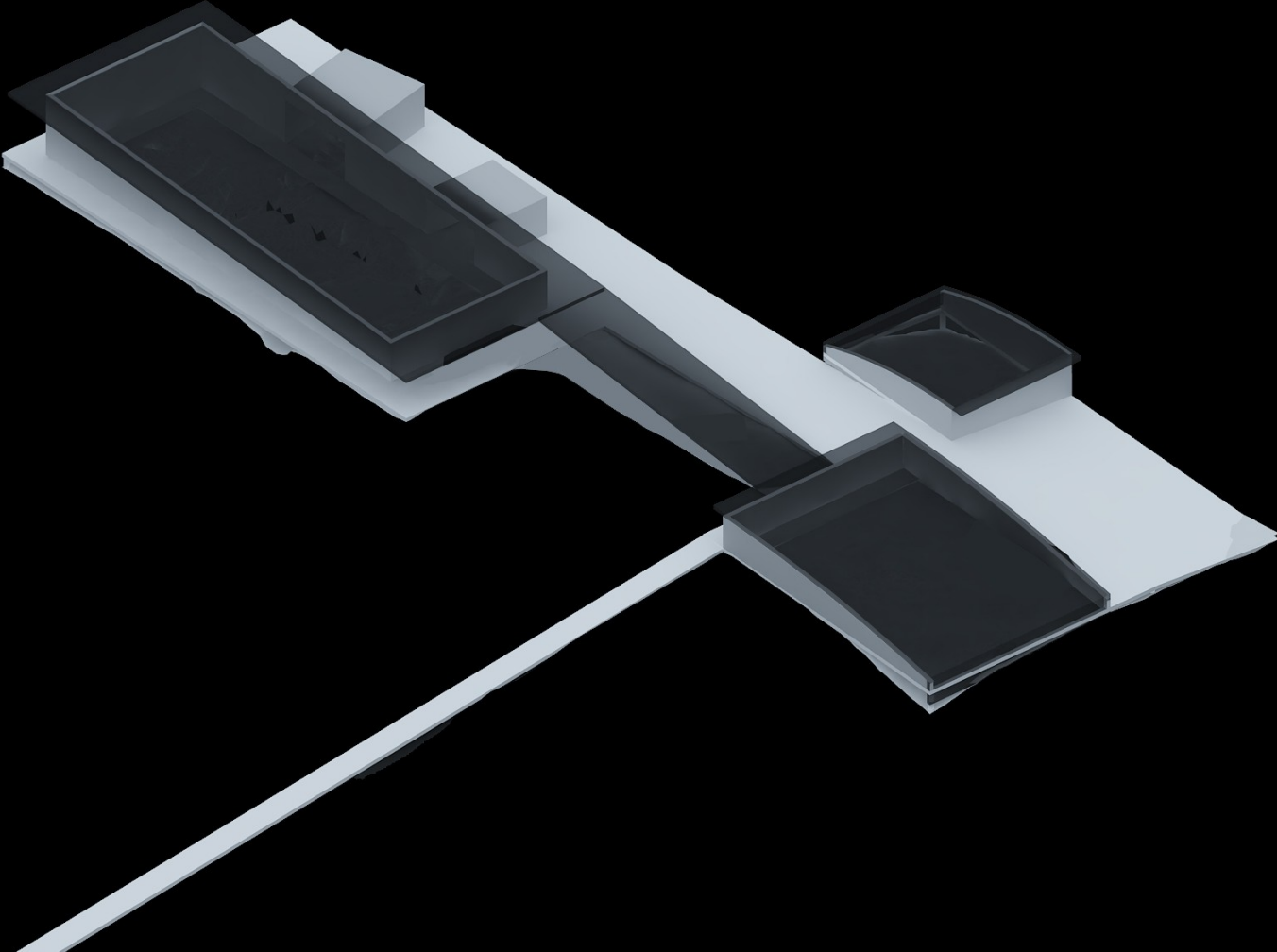
Spatial Analyses I



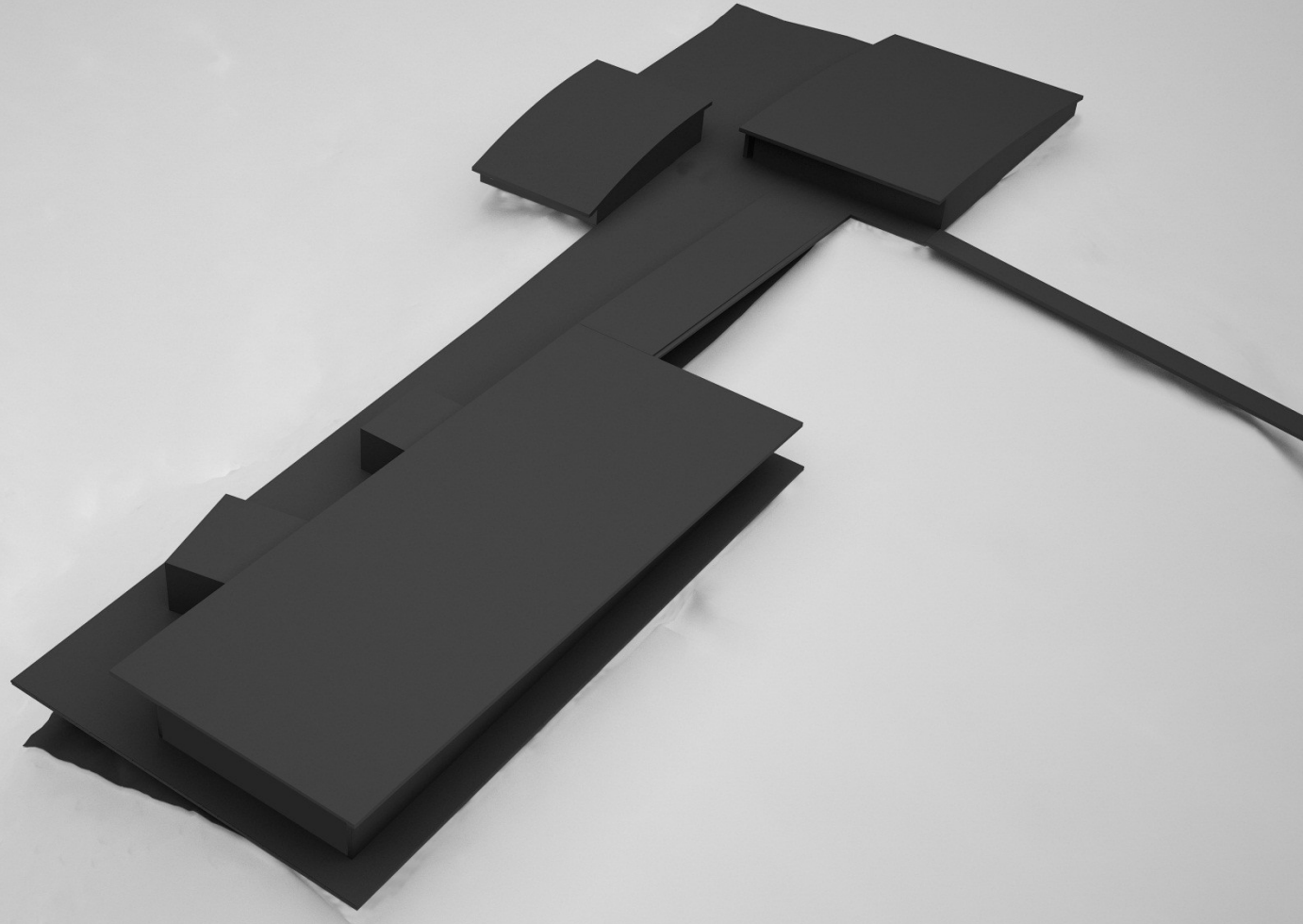
Spatial Analyses III



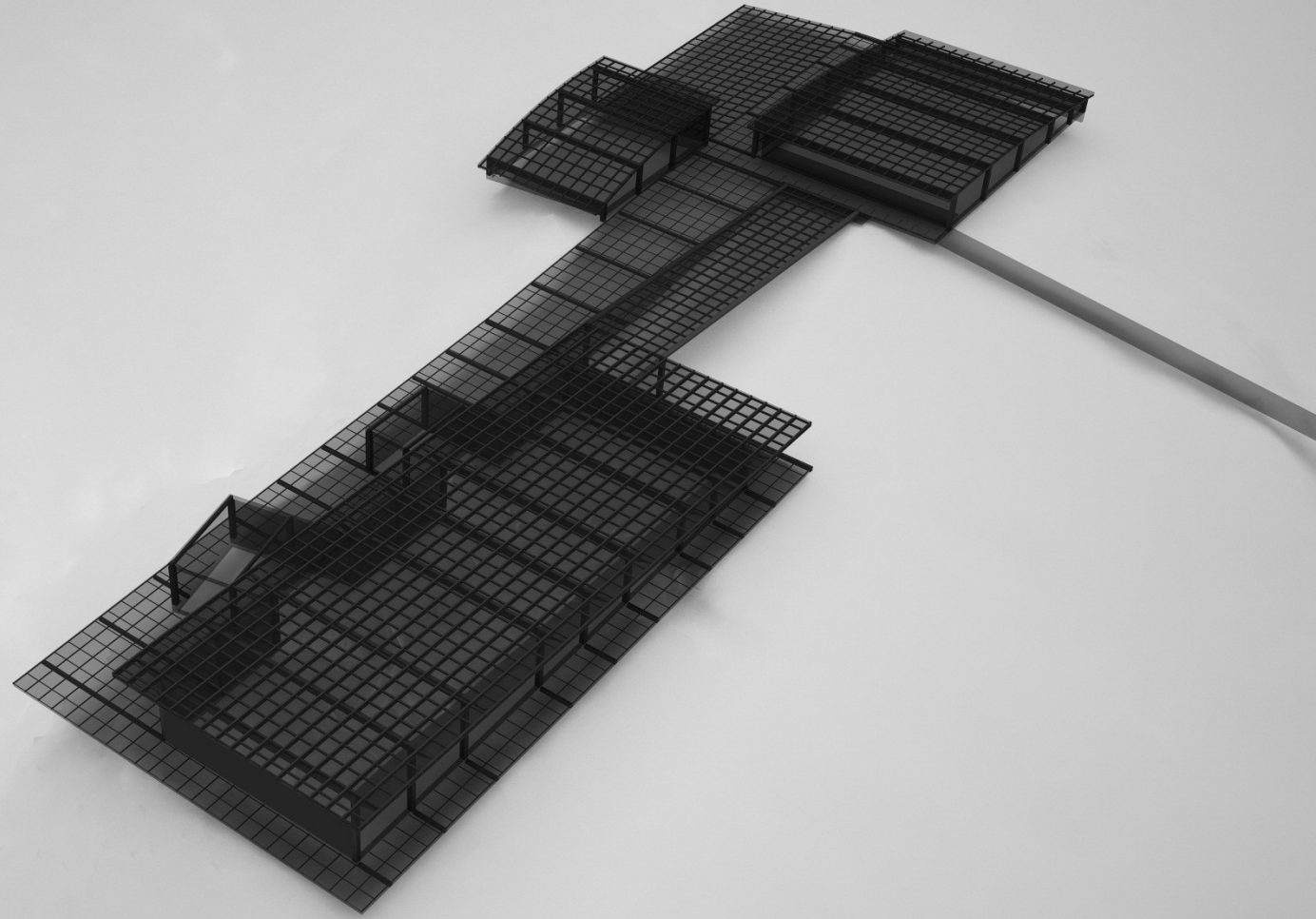
Spatial Analyses V

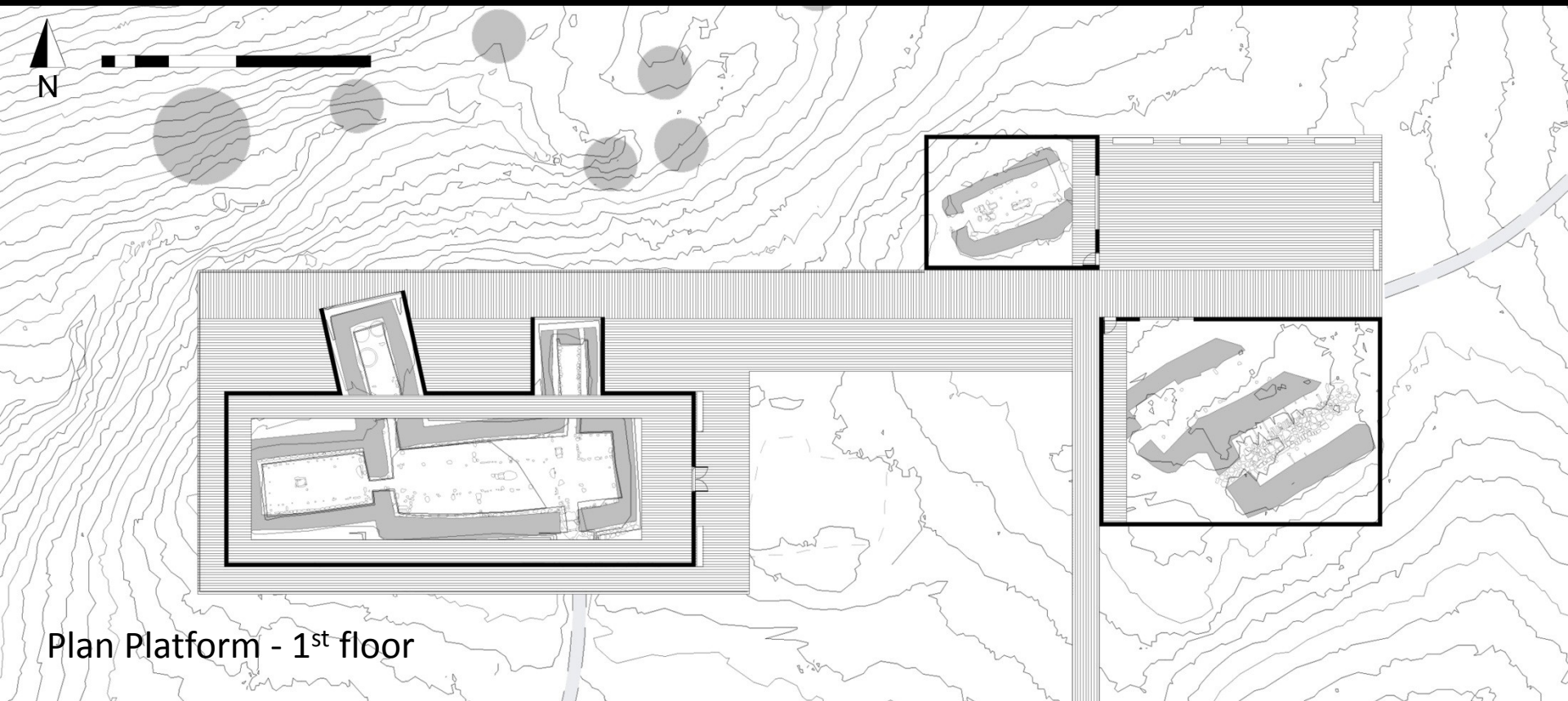


Perspective south west

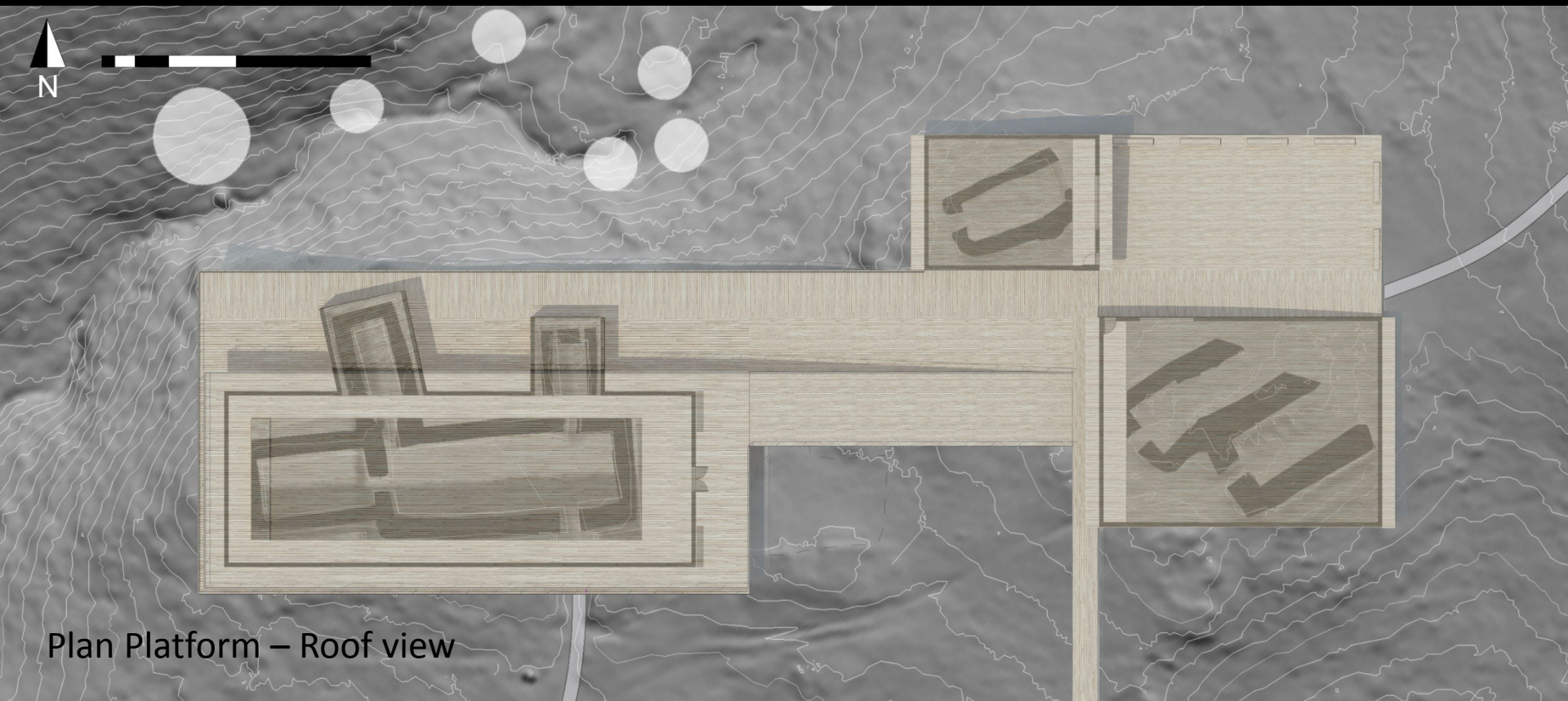


Perspective structure

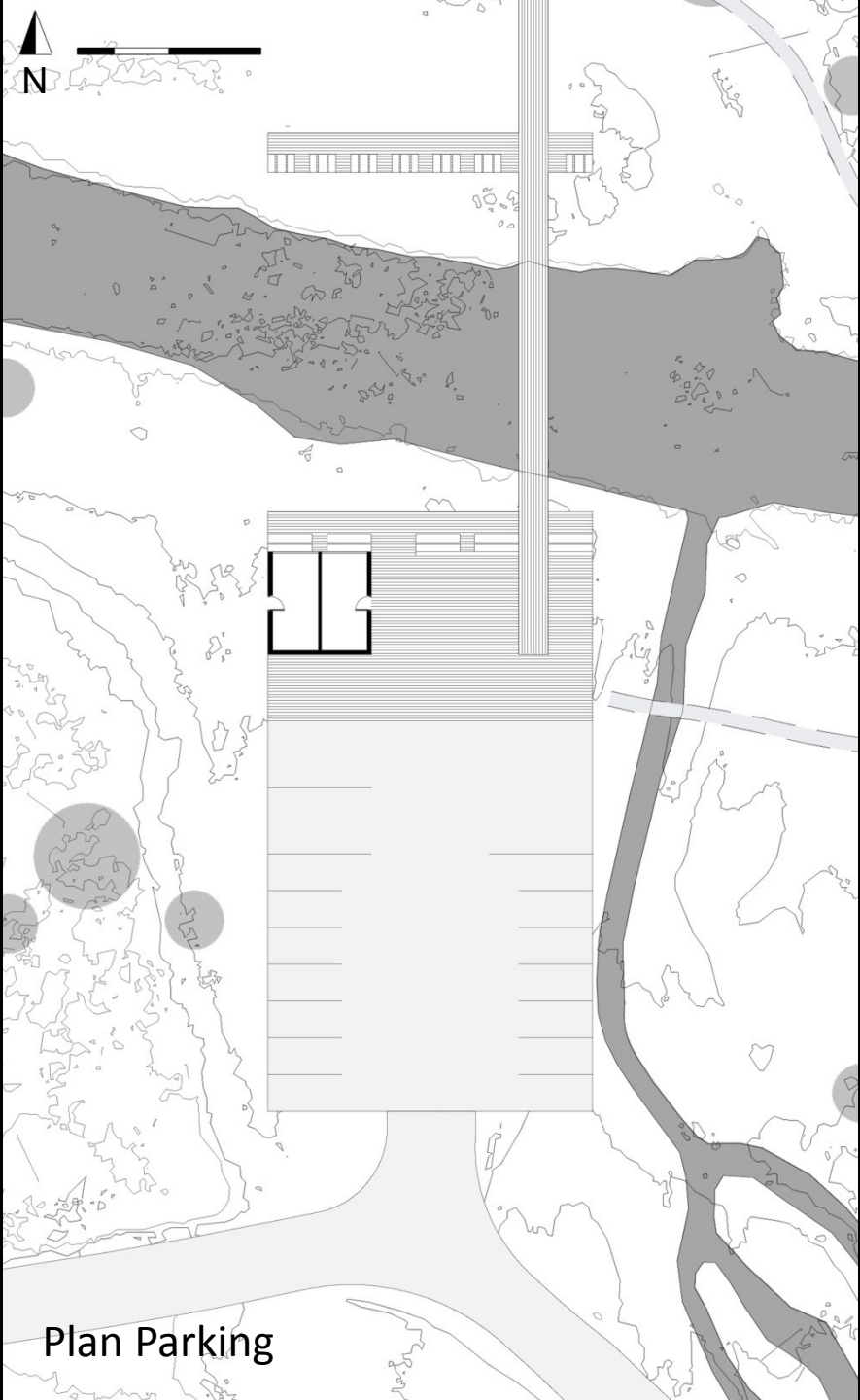




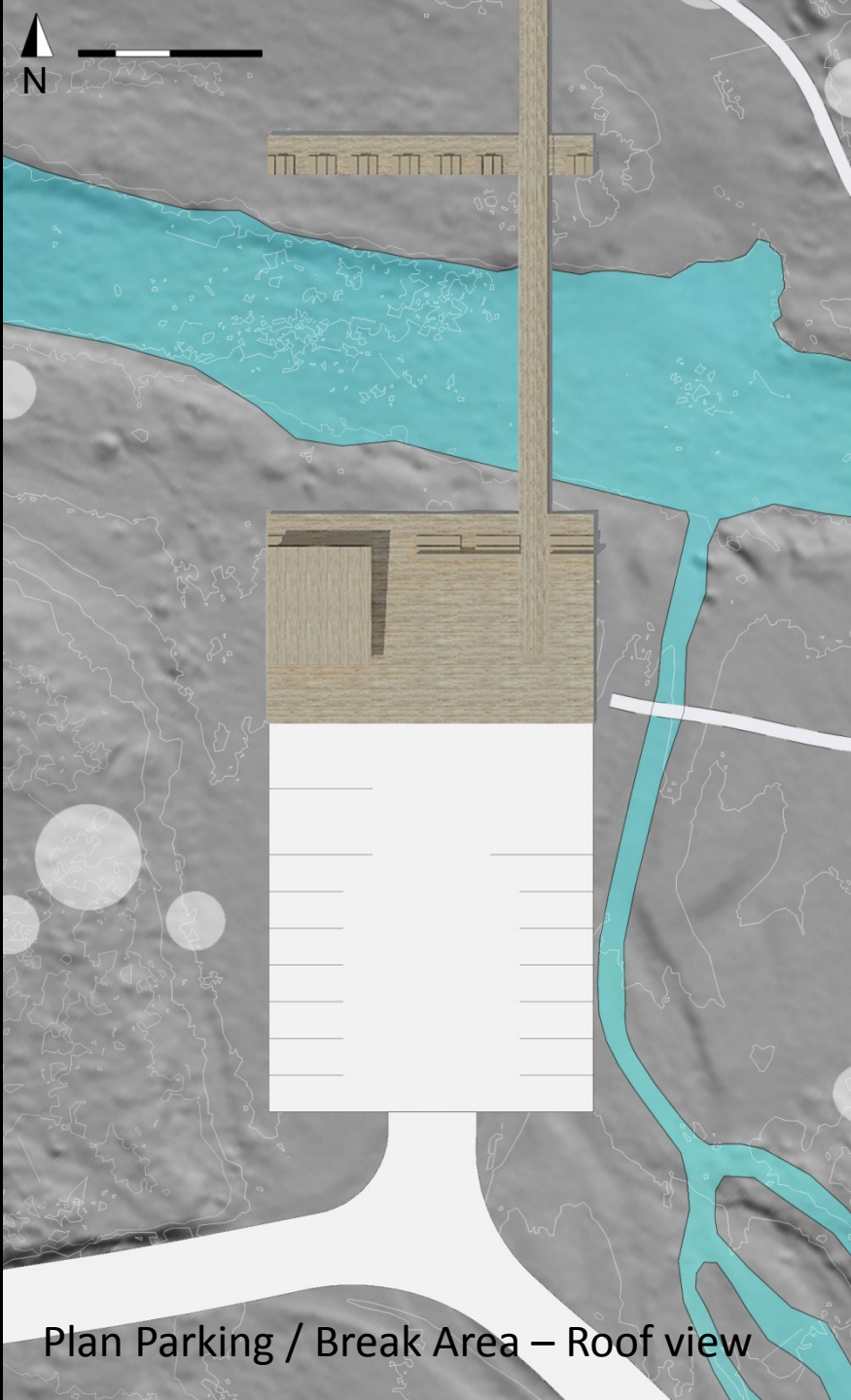
Plan Platform - 1st floor



Plan Platform – Roof view

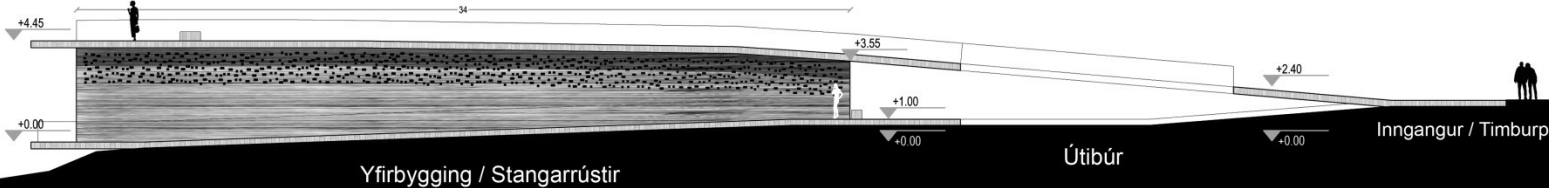


Plan Parking

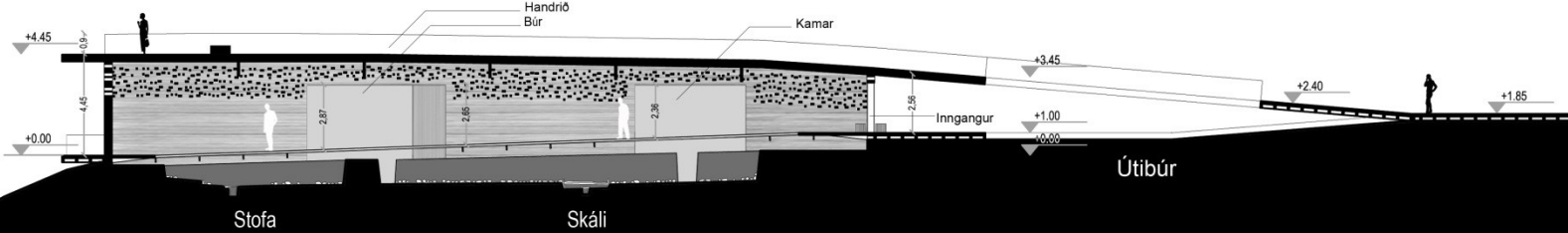


Plan Parking / Break Area – Roof view

South elevation



South cross section



View from existing bridge



View from existing bridge (zoom)



View over longhouse, smithy and cowshed ruins



View over main entrance to longhouse ruins



View from the inside of the longhouse ruins



View from break area following the new path

